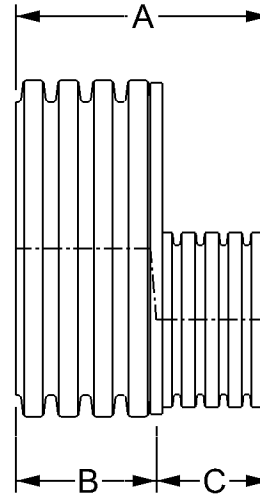


Size	A	B	C
24 x 4"	13 7/8	8 1/2	5 3/8
24 x 6"	14 1/2	8 1/2	6
24 x 8"	15 1/2	8 1/2	7
24 x 10"	15 7/8	8 1/2	7 3/8
24 x 12"	18 1/4	8 1/2	9 3/4
24 x 15"	20	8 1/2	11 1/2
24 x 18"	20 1/8	8 1/2	11 5/8



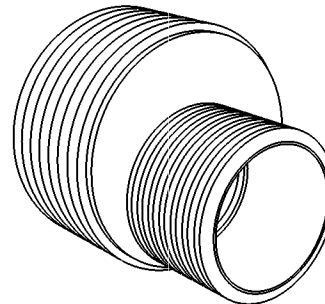
Size	A	B	C
30 x 4"	16 7/8	11 1/2	5 3/8
30 x 6"	17 1/2	11 1/2	6
30 x 8"	18 3/8	11 1/2	6 7/8
30 x 10"	19	11 1/2	7 1/2
30 x 12"	21 1/4	11 1/2	9 3/4
30 x 15"	22 7/8	11 1/2	11 1/2
30 x 18"	23	11 1/2	11 5/8
30 x 24"	23	11 1/2	11 5/8

Size	A	B	C
36 x 4"	20 3/4	15 3/8	5 3/8
36 x 6"	21 1/2	15 3/8	6
36 x 8"	22 3/8	15 3/8	6 7/8
36 x 10"	22 3/4	15 3/8	7 3/8
36 x 12"	25 1/8	15 3/8	9 3/4
36 x 15"	26 7/8	15 3/8	11 1/2
36 x 18"	27	15 3/8	11 1/2
36 x 24"	27	15 3/8	11 1/2
36 x 30"	30 3/4	15 3/8	15 3/8

Size	A	B	C
42 x 4"	20 1/2	15 1/8	5 3/8
42 x 6"	21 1/8	15 1/8	6
42 x 8"	22	15 1/8	6 7/8
42 x 10"	22 1/2	15 1/8	7 3/8
42 x 12"	24 7/8	15 1/8	9 3/4
42 x 15"	26 5/8	15 1/8	11 1/2
42 x 18"	26 3/4	15 1/8	11 5/8
42 x 24"	26 5/8	15 1/8	11 1/2
42 x 30"	30 1/2	15 1/8	15 3/8
42 x 36"	30 5/8	15 1/8	15 3/8

Size	A	B	C
48 x 4"	20 5/8	15 1/4	5 3/8
48 x 6"	21 1/4	15 1/4	6
48 x 8"	22 1/8	15 1/4	6 7/8
48 x 10"	22 5/8	15 1/4	7 3/8
48 x 12"	25	15 1/4	9 3/4
48 x 15"	26 5/8	15 1/4	11 1/2
48 x 18"	26 7/8	15 1/4	11 5/8
48 x 24"	26 3/4	15 1/4	11 1/2
48 x 30"	30 5/8	15 1/4	15 3/8
48 x 36"	30 5/8	15 1/4	15 3/8
48 x 42"	30 3/8	15 1/4	15 1/8

Eccentric and concentric flow lines available.



Dimensions shown are for reference only.  
All dimensions are in inches.



TITLE 24-48" Dual Wall Reducer - Plain End  
External

DRAWN BY JS

DATE 4-18-14